

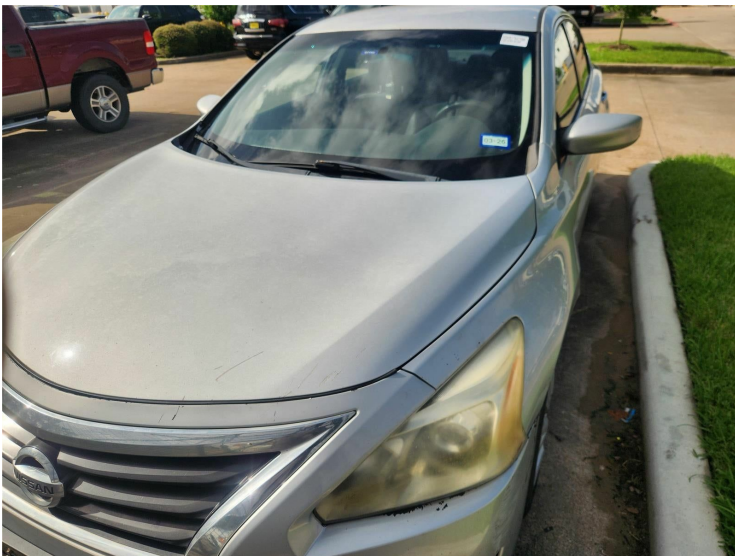


2014 Nissan Altima \$6,219

Dealer Information

To get more details or set up a test drive this vehicle

Call us now:(281) 884-3744 2112 Gulf Fwy S League City, Texas 77573



- Stock #:XDH579278B
- VIN:1N4AL3APXEC410888
- Mileage:192927
- Location:League City, Texas 77573
- Body Style:Sedan
- Int.Color:Charcoal
- Ext.Color:Brilliant Silver Metallic
- Transmission:Automatic
- Engine:2.5 Liter

Dealer Comments

This 2014 Nissan Altima 2.5 S, has a Brilliant Silver Metallic exterior and Charcoal interior color with only 192,927 miles. Stock Number XDH579278B. You can connect
with us by calling 346-358-1833.

OTHER NOTABLE FEATURES AND OPTIONS YOU SHOULD KNOW ABOUT:

<h4 class=""vc_build_feature_name"">Comfort</h4>
<ul class=""vc_build_feature_item_list""> The steering wheel rim is heated. Heated seats offer cool weather comfort by warming the seat quickly, before the air in the passenger compartment is fully warmed by the heater.<h4 class=""vc_build_feature_name"">Convenience</h4>
<ul class=""vc_build_feature_item_list""> Cruise control maintains a preset vehicle speed; automatically increasing or decreasing throttle to maintain that speed.<h4 class=""vc_build_feature_name"">Safety and Security</h4>
<ul class=""vc_build_feature_item_list""> The vehicle is equipped with a camera that displays an image of the area behind the vehicle on an interior display. The camera is equipped with its own washer. Brake assist senses panic braking from the speed of the brake pedal's travel and applies all available power brake boost.

BRILLIANT SILVER METALLIC, CHARCOAL, CLOTH SEAT TRIM, [C03] 50 STATE EMISSIONS, [B10] SPLASH GUARDS, [H01] DISPLAY AUDIO PACKAGE, [L92] FLOOR MATS W/O TRUNK MAT (4 PIECE)
At Mac Haik Toyota, we're here to Serve you! Our staff is 100% dedicated to customer satisfaction and we understand that you need clear, transparent information throughout the car buying process. With our live market pricing philosophy, we offer the right cars at the right price, and the transparency to back it up!

Installed Features

- Engine: 2.5L DOHC 16-Valve I-4|Transmission: Xtronic CVT (Continuously Variable)|Front-wheel drive|4.83 Axle Ratio|550CCA Maintenance-Free Battery w/Run Down Protection|110 Amp Alternator|Gas-Pressurized Shock Absorbers|Front And Rear Anti-Roll Bars|Electric Power-Assist Speed-Sensing Steering|18 Gal. Fuel Tank|Quasi-Dual Stainless Steel Exhaust w/Chrome Tailpipe Finisher|Strut Front Suspension w/Coil Springs|Multi-Link Rear Suspension w/Coil Springs|4-Wheel Disc Brakes w/4-Wheel ABS; Front Vented Discs; Brake Assist and Hill Hold Control|Tires: P215/60TR16 AS|Steel Spare Wheel|Compact Spare Tire Mounted Inside Under Cargo|Body-Colored Front Bumper|Body-Colored Rear Bumper|Chrome Side Windows Trim and Black Front Windshield Trim|Chrome door handles|Body-Colored Power Side Mirrors|Fixed Rear Window w/Defroster|Light Tinted Glass|Speed Sensitive Variable Intermittent Wipers|Front Windshield -inc: Sun Visor Strip|Galvanized Steel/Aluminum Panels|Black Grille w/Chrome Surround|Trunk Rear Cargo Access|Auto On/Off Projector Beam Halogen Headlamps w/Delay-Off|Radio w/Clock|Window Grid Antenna|6 Speakers|Bluetooth® Wireless Phone Connectivity|1 LCD Monitor In The Front|Front Bucket Seats -inc: 6-way power adjustable driver's seat and 4-way manual adjustable passenger's seat|Driver Seat|Passenger Seat|60-40 Folding Bench Front Facing Fold Forward Seatback Rear Seat|Manual Tilt/Telescoping Steering Column|Front Cupholder|Rear Cupholder|Front Cigar Lighter(s)|Ashtray|Valet Function|Remote Releases -Inc: Power Cargo Access and Mechanical Fuel|Cruise Control w/Steering Wheel Controls|Manual Air Conditioning|HVAC -inc: Underseat Ducts|Illuminated Locking Glove Box|Driver foot rest|Interior Trim -inc: Metal-Look Instrument Panel Insert; Metal-Look Door Panel Insert; Metal-Look Console Insert and Chrome Interior Accents|Full Cloth Headliner|Cloth Door Trim Insert|Urethane Gear Shifter Material|Day-Night Rearview Mirror|Driver And Passenger Visor Vanity Mirrors w/Driver And Passenger Illumination|Full Floor Console w/Covered Storage; Mini Overhead Console w/Storage and 2 12V DC Power Outlets|Front And Rear Map Lights|Fade-To-Off Interior Lighting|Full Carpet Floor Covering|Carpet Floor Trim and Carpet Trunk Lid/Rear Cargo Door Trim|Cargo Area Concealed Storage|Cargo Space Lights|Driver / Passenger And Rear Door Bins|Delayed Accessory Power|Driver Information Center|Outside Temp Gauge|Analog Appearance|Manual Adjustable Front Head Restraints and Fixed Rear Head Restraints|Front Center Armrest w/Storage and Rear Center Armrest|Seats w/Cloth Back Material|2 Seatback Storage Pockets|Perimeter Alarm|Immobilizer|2 12V DC Power Outlets|Air Filtration|Side Impact Beams|Dual Stage Driver And Passenger Seat-Mounted Side Airbags|Tire Specific Low Tire Pressure Warning|Dual Stage Driver And Passenger Front Airbags|Curtain 1st And 2nd Row Airbags|Airbag Occupancy Sensor|Rear child safety locks|Outboard Front Lap And Shoulder Safety Belts -inc: Rear Center 3 Point; Height Adjusters and Pretensioners

Sales Tax, License Fee, Registration Fee, Dealer Documentary Fee, Finance Charges, Emission Testing Fees and Compliance Fees are additional to the advertised price.