

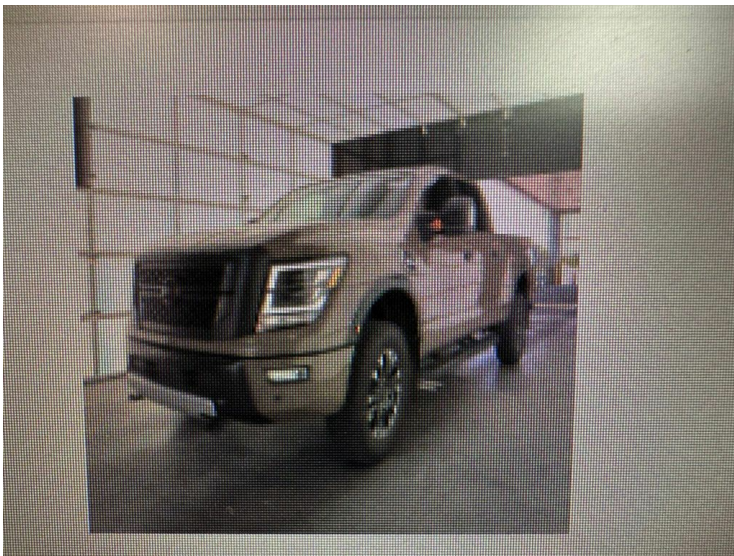


2024 Nissan Titan XD \$54,991

Dealer Information

To get more details or set up a test drive this vehicle

Call us now:(281) 516-6738 24202 Tomball Parkway Tomball, Texas 77375



- Stock #:RN116083P
- VIN:1N6AA1FB9RN116083
- Mileage:17563
- Location:Tomball, Texas 77375
- Body Style:Truck
- Int.Color:Black
- Ext.Color:Baja Storm
- Transmission:Automatic
- Engine:5.6L V8 DOHC 32V Federal 400hp

Dealer Comments

Certified. Recent Arrival! CARFAX One-Owner.Clean CARFAX. Baja Storm 2024 Nissan Titan XD PRO-4X Titan XD PRO-4X Premium Pkg, Conv Pkg, Off Road Pkg, Nissan Certified Certified, 4D Crew Cab, 5.6L V8 DOHC 32V Federal 400hp, 9-Speed Automatic, 4WD, Baja Storm, 4-Way Power Assist Seat, Dual Panel Panoramic Moonroof w/Tilt & Slide, Engine Remote Start, Gooseneck Hitch, Heated Driver & Passenger Front Seats, Heated Power Tilt/Telescopic Steering Wheel, Heated Rear Seats, Illuminated Kick Plate - PRO-4X, Intelligent Around View Monitor (I-AVM), Leather Seat Trim w/Contrasting Stitch, Memory Driver Seat w/Auto Entry/Exit Feature, Memory Outside Mirrors, Off Road Protection Package (K94), Premium Package, PRO-4X Convenience Package, PRO-4X Mud Flaps, PRO-4X Rugged Step Boards, Special Paint - Baja Storm, Titan Box, Ventilated Driver & Front Passenger Seats.Nissan Certified Details: \* Roadside Assistance \* Transferable Warranty \* Vehicle History \* Limited Warranty: 84 Month/100,000 Mile (whichever occurs first) \* 7 Year/100,000 Mile Limited Warranty, 24/7 Hour Roadside Assistance, Carfax Vehicle History Report, Plus 1 Year Pre-Paid Maintenance Included. Gas Powered Nissan Models Only. \* Warranty Deductible: \$100 \* 167 Point InspectionBg Unlimited Miles Powertrain Warranty. See Dealer for warranty details.Tomball, Houston, Harris, Montgomery, Katy, The Woodlands, Spring, 77375. Please call ahead to check availability!!

Installed Features

- Navigation system: NissanConnect with Navigation and Services|Off Road Protection Package (K94)|Premium Package|PRO-4X Convenience Package|12 Speakers|AM/FM radio: SiriusXM|Radio data system|Radio: NissanConnect w/Navigation|Air Conditioning|Automatic temperature control|Front dual zone A/C|Rear window defroster|Heated Rear Seats|Memory Outside

Mirrors|Power driver seat|Power steering|Power windows|Remote keyless entry|Steering wheel mounted audio controls|Speed-sensing steering|Traction control|4- Wheel Disc Brakes|ABS brakes|Dual front impact airbags|Dual front side impact airbags|Emergency communication system: NissanConnect Services|Engine Remote Start|Front anti-roll bar|Front wheel independent suspension|Knee airbag|Low tire pressure warning|Occupant sensing airbag|Overhead airbag|Rear anti-roll bar|Dual Panel Panoramic Moonroof w/Tilt & Slide|Blind Spot Warning|Brake assist|Electronic Stability Control|Auto High-beam Headlights|Delay-off headlights|Front fog lights|Fully automatic headlights|Panic alarm|Security system|Speed control|Heated door mirrors|Power door mirrors|PRO-4X Mud Flaps|PRO-4X Rugged Step Boards|Rear step bumper|Special Paint - Baja Storm|Turn signal indicator mirrors|Auto-dimming Rear-View mirror|Compass|Driver door bin|Driver vanity mirror|Front Captain's Seats|Front reading lights|Garage door transmitter: HomeLink|Heated Power Tilt/Telescopic Steering Wheel|Illuminated entry|Illuminated Kick Plate - PRO-4X|Intelligent Around View Monitor (I-AVM)|Leather steering wheel|Outside temperature display|Overhead console|Passenger vanity mirror|Rear seat center armrest|Tachometer|Telescoping steering wheel|Tilt steering wheel|Voltmeter|4-Way Power Assist Seat|Front Bucket Seats|Front Center Armrest|Heated Driver & Passenger Front Seats|Leather Seat Trim w/Contrasting Stitch|Memory Driver Seat w/Auto Entry/Exit Feature|PRO-4X Style Cloth Seat Trim|Split folding rear seat|Ventilated Driver & Front Passenger Seats|Passenger door bin|Titan Box|Gooseneck Hitch|Alloy wheels|Wheels: 18" x 7.5" Painted Dark Finish Alloy|Rain sensing wipers|Speed-Sensitive Wipers|Variably intermittent wipers|4.083 Axle Ratio

Sales Tax, License Fee, Registration Fee, Dealer Documentary Fee, Finance Charges, Emission Testing Fees and Compliance Fees are additional to the advertised price.